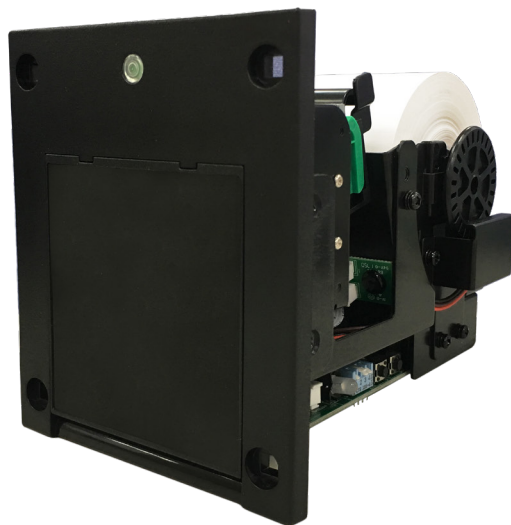


# ***TGP58***

*PRINTER TOOL GUIDE*





Top Vending Machine Electronics Co.,Ltd.

NO.11, Anzhong St., Luzhu Dist., Taoyuan City338, Taiwan, (R.O.C.)

Phone : +886-3-3115969 · Fax : +886-3-3115970

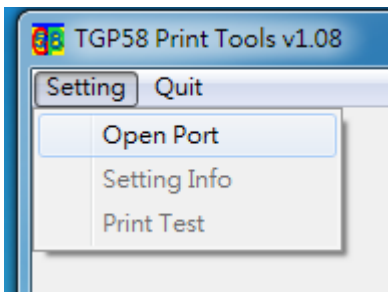
E-mail : [sales@topvme.com.tw](mailto:sales@topvme.com.tw)

Website : [www.topvme.com](http://www.topvme.com)

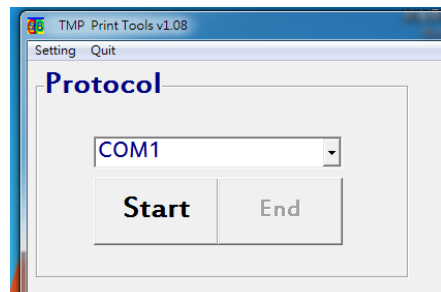
Open the serial port that TGP58 is at

1. Select COM PORT that TGP58 is plugged in.
2. Press [Connect] Button.

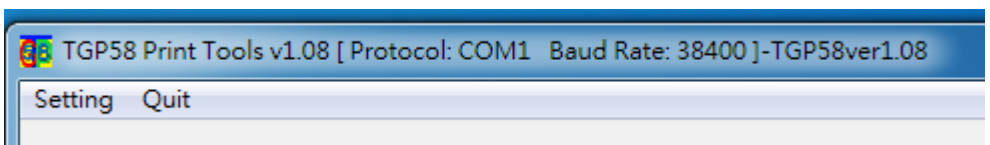
- \* When connected, protocol information, "Protocol: COM2 Baud Rate: 9600", will be displayed after the title on application title bar.
- \* The connection between TGP58 and this system is necessary to setup TGP58 or upload LOGO.
- \* If you need to change connection come port, press [Disconnect], select new one, and then press [Connect].



(Figure 1)

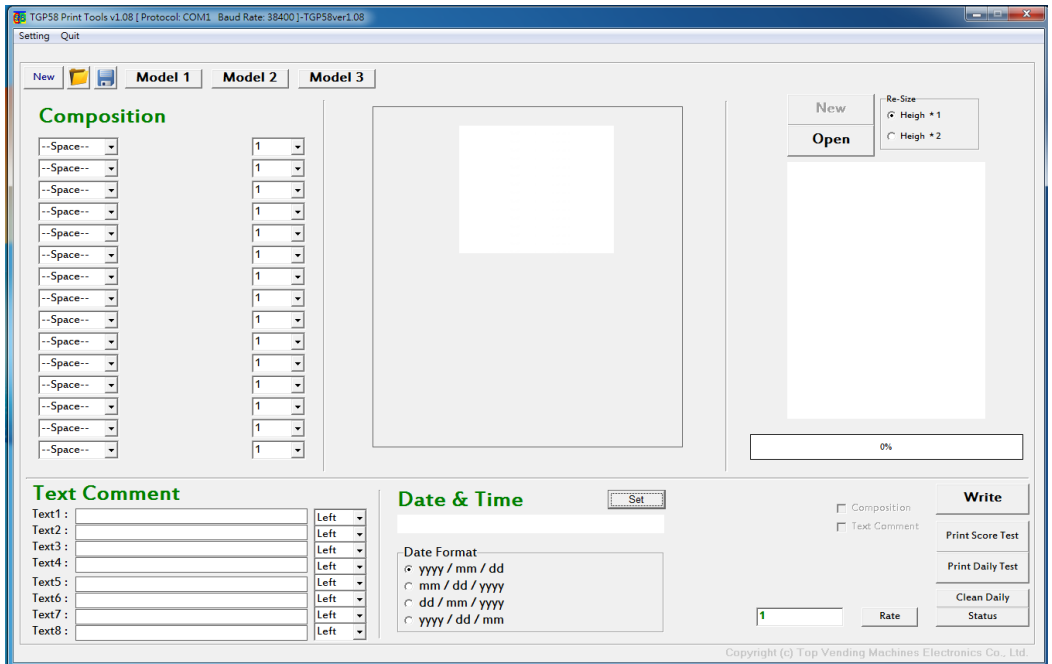


(Figure 2)



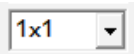
(Figure3)

## MENU->Settings->Setting Info




(Figure 4)

Composition : Customize the order of content to print.

1. LOGO : Load your LOGO form MENU > Settings > Upload LOGO.
2. 2 Dimensional Code : tow parallel set of QR Code.
3. Point : Game point. Select up to four scaled type in dropdown list  
 , including 1x1 , 1x2 , 2x1 and 2x2.
4. Date : Synchronizing the date of TGP58 with computer.
5. BarCode : Save Company number, machine S/N 、 sequence number.
6. Text1~4 : Notes, fill information in text inputs. Select up to four scaled

type in dropdown list  , including 1x1 , 1x2 , 2x1 and 2x2.

7. Spacer : Select 1 to 10 spacers in dropdown list  spacers's height is 2.5mm.

**Upload Text content** : TGP58 provides four lines of text content, each line can contain up to 24 characters. Set the alignment with the dropdown list at the right side.

**Time and Date** : Press the [Set] to synchronize the date of TGP58 with computer.

**Save** : Save these four settings above to profile.



**Open** : Load saved profile.



**Clear Daily report** : Clear the value of daily report.

Click the button [Write] and the setting to TGP58 will be done once the finished dialog popup.

**Template 1 、 Template 2 、 Template 3** : three kind of built-in composition

## Composition

Logo	Logo	
--Space--		1
QrCode	QrCode	
--Space--		1
Text4	Text4	2x4
Score	Score	2x4
--Space--		1
-reserve-		
--Space--		1
BarCode	BarCode	
--Space--		1
Text1	Text1	2x2
Text2	Text2	2x2
Text3	Text3	2x2
--Space--		1

Typographic preview display, as shown below.

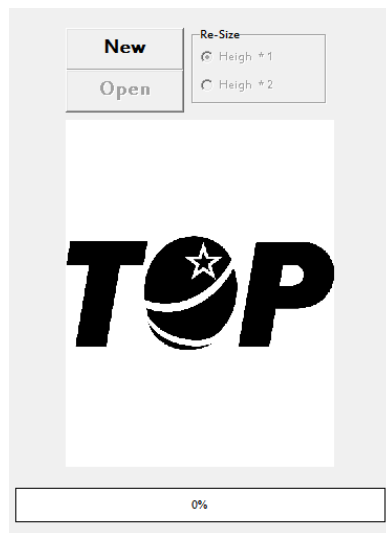


### Load LOGO

**New:** Clear the screen

**Open:** Open BMP file

**Resize:** set the height of the BMP file x1 or x2



Text Comment : TGP58 provides eight lines of text, each line can be written up to 24 characters.

The right option selects where the line prints, left, centered, or right.

Text Comment

Text1 :	Top Vending Machines	Left
Text2 :	Electronics Co., Ltd.	Right
Text3 :	TEL:+886-3-3115969	Right
Text4 :	POINTS	Center
Text5 :	Top Vending Machines	Left
Text6 :	Electronics Co., Ltd.	Right
Text7 :	TEL:+886-3-3115969	Right
Text8 :	POINTS	Center

Date and time: Press [Set] to write the host system time to TGP58. The date format changes the year, month, and day of the print.

Date & Time

Set

Date Format

☒ yyyy / mm / dd

☐ mm / dd / yyyy

☐ dd / mm / yyyy

☐ yyyy / dd / mm



### **Write all settings**

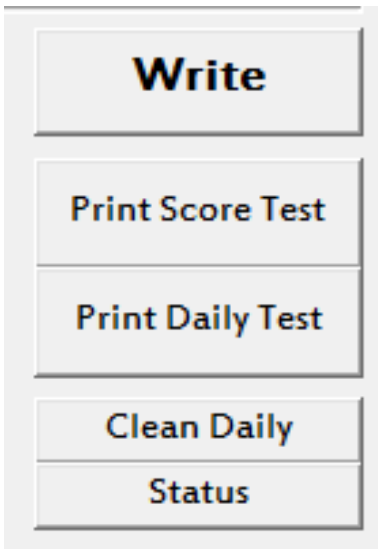
**Write:** Press the [Write] button to display the completion dialog box, that is, complete the TMP setting.

**Print score test:** print layout test

**Print daily test:** print log records

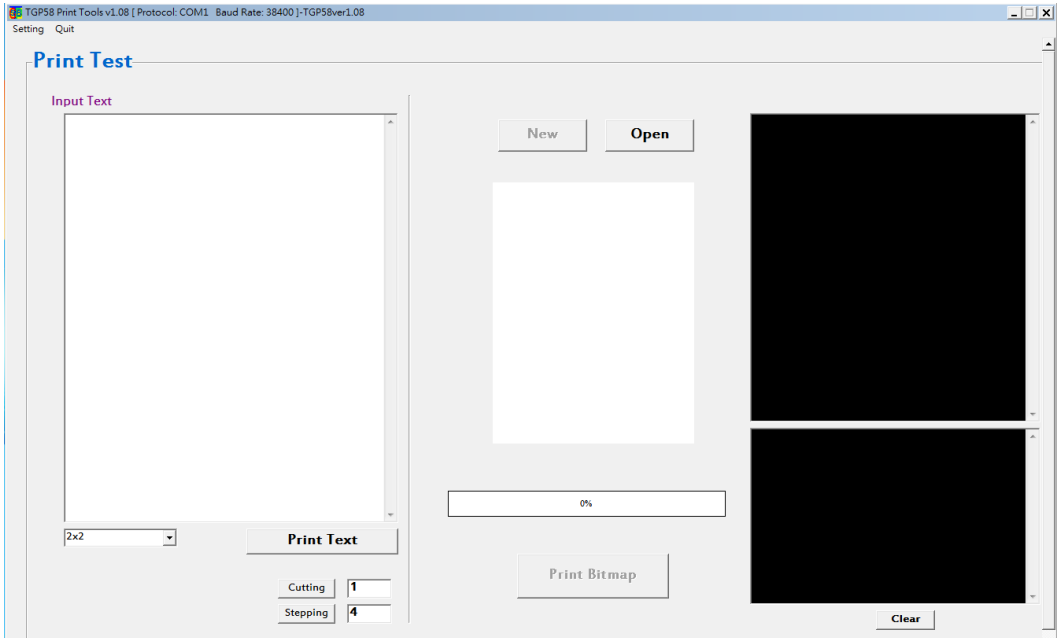
**Daily cleaning:** clear logging

**Status:** Status display



6. Click on Setting->Print Test and the following icon appears.

This screen is a timely print function



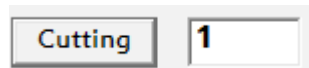
Input Text : Enter the printed text



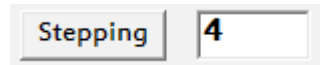
Set print SIZE



Start printing



Cutting test



Induction paper stepping (2.5mm / 1)

Ps. Print SIZE setting 1x1 column can print 48 words, SIZE setting 2x2 column can print 24 words, If a column of text is entered more than the number of printed words, it will be cropped and will not automatically wrap.

## 7.Bitmap printing

Press Print Bitmap to print the logo





Top Vending Machine Electronics Co., Ltd.



[WWW.TOPVME.COM](http://WWW.TOPVME.COM)