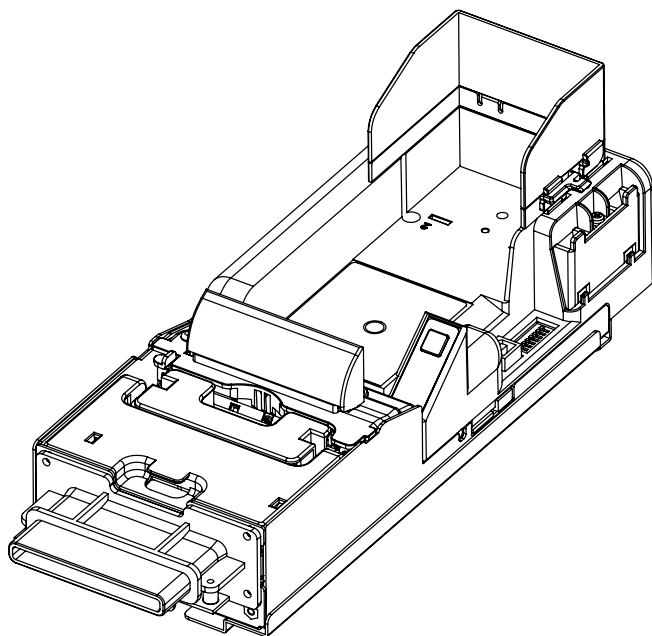




# FBP66

Thermal Printer  
Installation Guide



Thank you for choosing TOP VME .



# Content



1. Introduction.....	1
1-1. Overview .....	1
1-2. Features .....	1
2. Specifications.....	2
2-1.General.....	2
2-2 Electrical .....	2
2-3. Mechanical .....	2
3. Dimension .....	3
4. Ticket.....	4
4-1. Ticket Size .....	4
4-2. Custom Area .....	4
5. Installation .....	5
5-1. Cable Application .....	5
5-2. I/O Circuits.....	7
5-3. DIP Switch Setting .....	8
5-4. Download.....	9
5-5. Limitation .....	10
5-6. Accessories Installation .....	11
5-7. Paper Replenishing .....	12
6. Maintenance .....	13
7. Troubleshooting .....	14





## 1. Introduction

### 1-1. Overview

FBP66 is a brand new gaming printer which match with Ticket In and Ticket Out (TITO) System perfectly. It also able to connect to the fruit machine (also known as slot machine) and print tickets for players in real time. Besides equipped with a RS232 port, an individual plug-in port is provided for firmware upgrade .

### 1-2. Features

- Durable, easy maintenance
- High-speed, excellence printing quality

## 2. Specifications

### 2-1.General

Interface	RS232
Printing Method	Thermal
Printing Speed	40±5mm/s
Resolution	8dots / mm (203 dpi)
Fonts	3(8.5cpi, 12.7 cpi, 25.4 cpi)
Barcodes	Interleaved 2of 5
Paper Size	Length: 156±1mm
	Width: 65±1mm
	Thickness: 0.1mm
Paper Material	Thermal Paper
Paper Weight	102g / m <sup>2</sup>

### 2-2 Electrical

Power Source	24V DC / 5A
Power Consumption	Standby: 0.2A,4.8W
	Operation: 3.5A,84W
	Maximum: 4.5A, 108W
Operation Environment	Operation Temp: 0~ +50° C
	Storage Temp:- 20~ +60° C
	Humidity: 30~50%RH (no condensation)

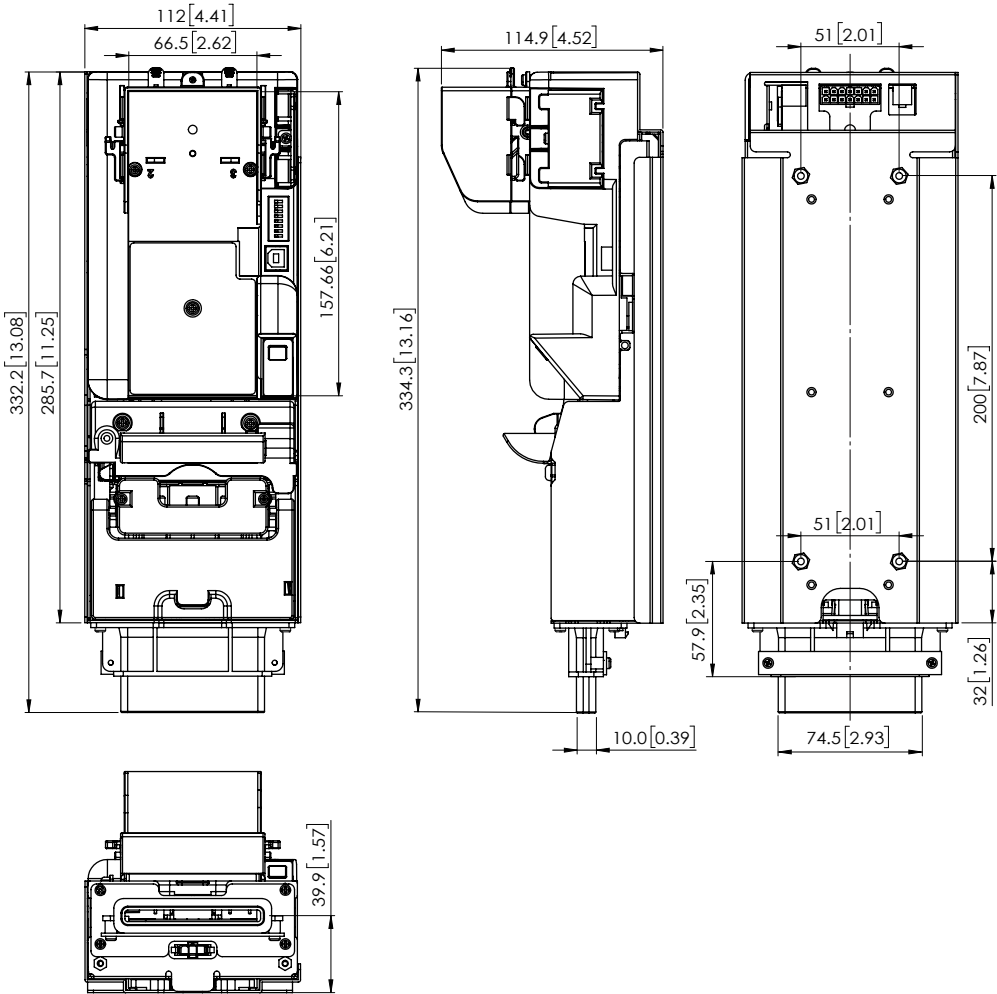
### 2-3. Mechanical

Capacity	200 Tickets / 400 Tickets
Wight	1.5kg
Place	Indoor



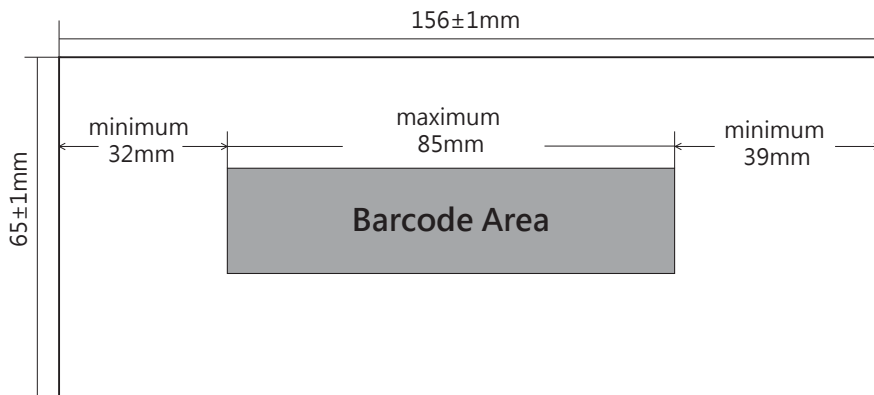
### 3. Dimension

Unit : mm [inch]



## 4. Ticket

### 4-1. Ticket Size



### 4-2. Custom Area

Sample for reference, fonts can be adjusted



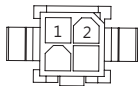


# 5. Installation

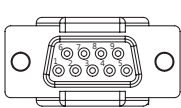
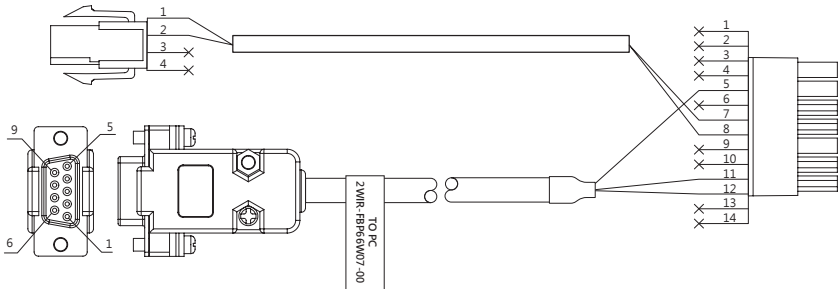
## 5-1. Cable Application FOR USART / USB

### HARNESS FORMAT

2WIR-FBP66W07-00

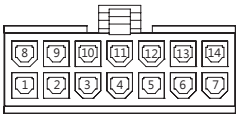


PIN NO	COLOR	PIN DEFINE
PIN1	RED	+24V DC
PIN2	BLACK	GND



TOP VIEW

PIN NO	COLOR	PIN DEFINE
PIN2	WHITE	RS232-TXD
PIN3	PURPLE	RS232-RXD
PIN5	BLACK	GND

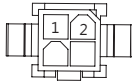


TOP VIEW

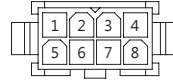
PIN NO	COLOR	PIN DEFINE
PIN5	BLACK	GND
PIN7	BLACK	GND
PIN8	RED	+24V DC
PIN11	PURPLE	RS232-TXD
PIN12	WHITE	RS232-RXD

# HARNESS FORMAT

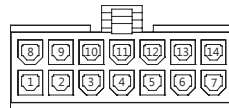
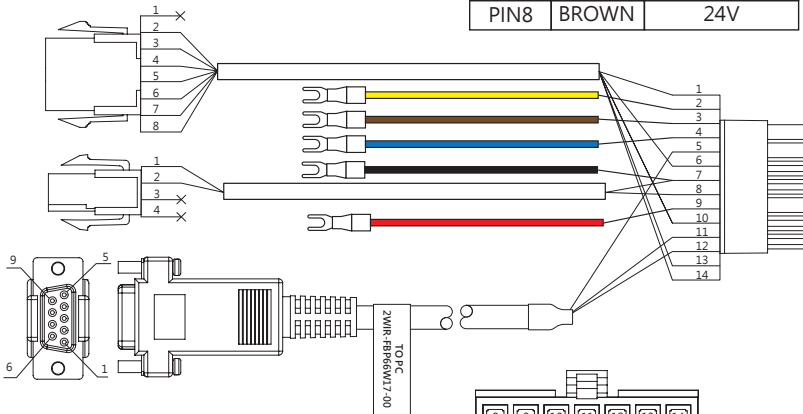
## 2WIR-FBP66W17-00



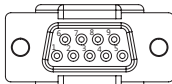
PIN NO	COLOR	PIN DEFINE
PIN1	RED	+24V DC
PIN2	BLACK	GND



PIN NO	COLOR	PIN DEFINE
PIN2	PURPLE	RTS
PIN3	BLUE	DTR
PIN4	GREEN	Netplex Reset
PIN5	YELLOW	GND
PIN6	ORANGE	GND
PIN7	RED	24V
PIN8	BROWN	24V



TOP VIEW



TOP VIEW

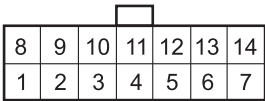
DB9 PIN OUT		
PIN NO	COLOR	PIN DEFINE
PIN2	BROWN	RS232-TXD
PIN3	ORANGE	RS232-RXD
PIN5	BLACK	GND

Molex Mini-Fit Jr. 39-01-3149 / 39-01-2140					
PIN NO	COLOR	PIN DEFINE	PIN NO	COLOR	PIN DEFINE
PIN1	GREEN	Netplex Reset	PIN8	RED	24VDC
PIN2	YELLOW	Netplex TX	PIN9	RED	Bezel LED
PIN3	BROWN	12V-Input	PIN10		GND
PIN4	BLUE	Netplex RX	PIN11	BROWN	RS232-RXD
PIN5	BLACK	GND	PIN12	ORANGE	RS232 TXD
PIN6		24VDC	PIN13		No Consider
PIN7	BLACK	GND	PIN14		No Consider

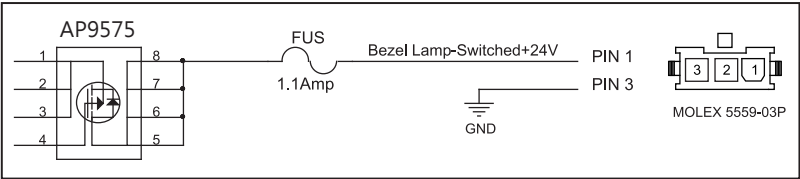
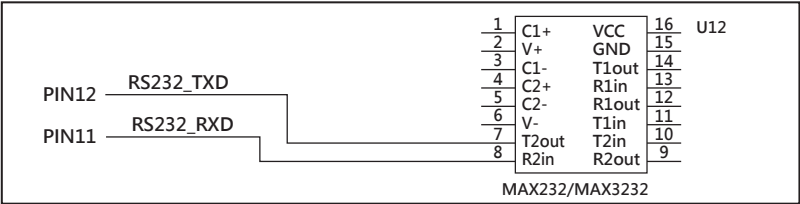
5-2. I/O Circuits

RS232 Communication Interface PCB.

RS232 interface connector is a 14 position Molex Minifit JrR, part number 39-30-1140 · which mates with Molex part number 39-01-2140 or equivalent.

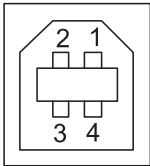


PIN	FUNCTION	I/O	PIN	FUNCTION	I/O
1	Not Connected	-	8	+24V/DC	I
2	Not Connected	-	9	Bezel Lamp-Switch +24V/DC	O
3	Not Connected	-	10	GND	-
4	Not Connected	-	11	RS232 RXD	I
5	GND	I	12	RS232 TXD	O
6	+24V/DC	I	13	Not Connected	-
7	GND	I	14	Not Connected	-



USB Communications Interface PCB

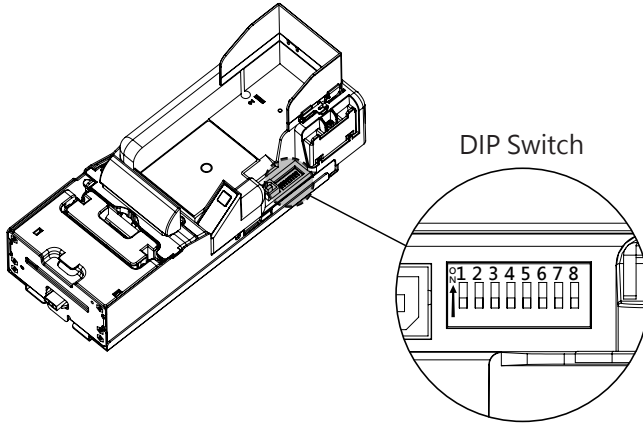
The USB Communications PCB contains two connectors. Power-4 position Molex Minifit JrR, part number 39-30-1040, and Molex part number 39-01 2040 or equivalent USB communication Type B USB connector.



PIN	FUNCTION	I/O
1	VBUS	-
2	D-	I/O
3	D+	I/O
4	GND	-



### 5-3. DIP Switch Setting



SW	OFF	ON
SW1	Inventory Level Low- OFF	* Inventory Level Low - ON
SW2	Ticket Out Detection - OFF	* Ticket Out Detection - ON
SW3	* Normal Mode	Testing Mode (Notes 1)
SW4	* Reserved	Reserved
SW5	* Reserved	Reserved
SW6	* Reserved	Reserved
SW7	* Reserved	Reserved
SW8	* Reserved	Reserved

\* : default settings

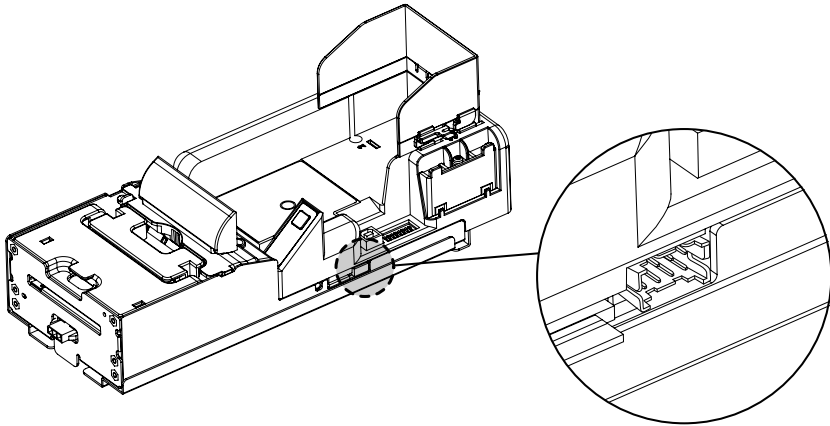
Notes 1 : In NORMAL mode keep pressing "FEED" 5 seconds for printing testing: blank ticket.

In TESTING mode keep pressing "FEED" 5 for printing testing: testing template. °



## 5-4. Programme Download

Please refer to G-Box user guide for G-Box firmware download or update process instructions, the user guide can be obtained from the local sales agent or downloaded from "[www.topvme.com](http://www.topvme.com)" download area.

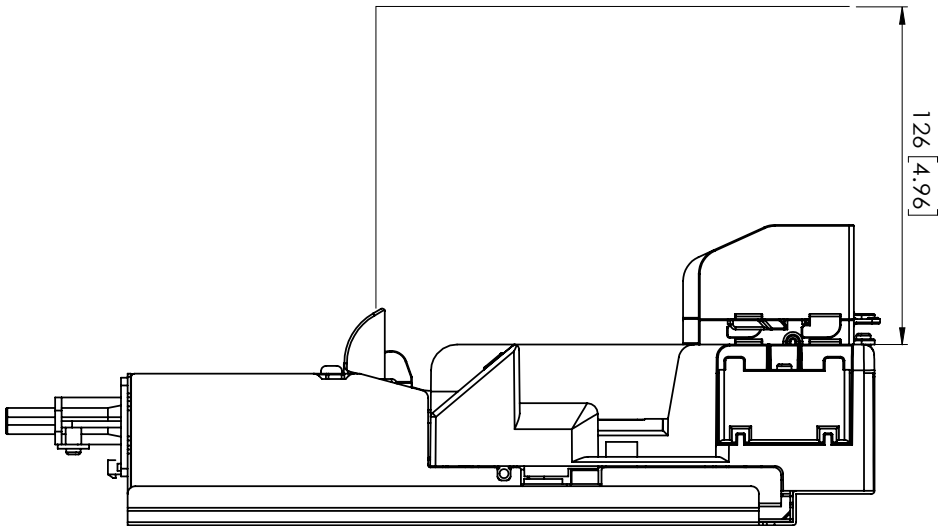




### 5-5. Limitation

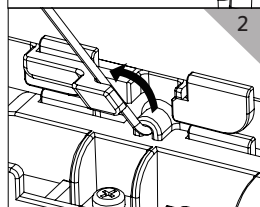
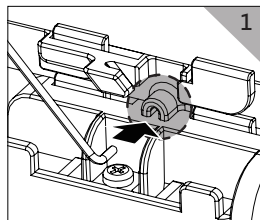
Please refer to the following diagram for mounting installation  
( To avoid breakage of the ticket and failure of operation, enough height has to be reserved during ticket movement as ticket connecting to each other)

Unit : mm [ inch ]

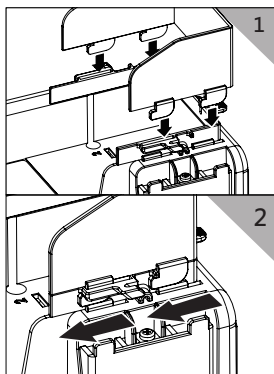




## 5-6. Accessories Installation

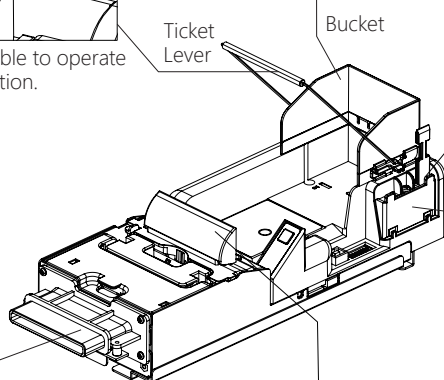
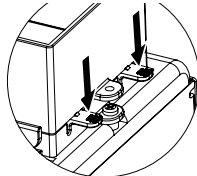


Uninstall until able to operate in reverse direction.



Press the highlight button to release and loosen accessories, then operate towards opposite direction to release.

Press here to uninstall

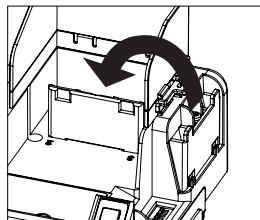


Cleaning Pin

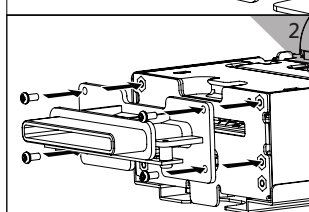
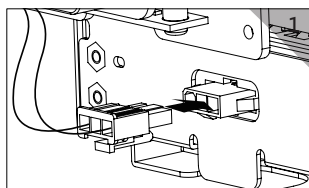
Place here while not in use.



Partition



Using this accessory to make sure shorter ticket operate in right track.



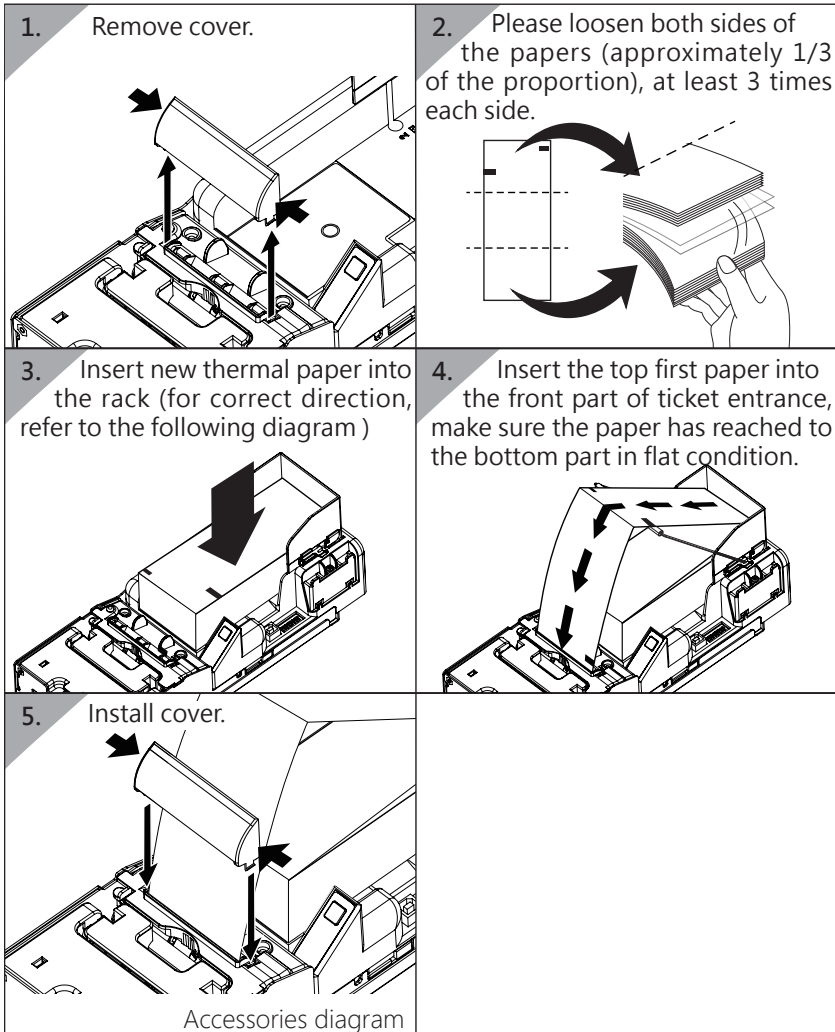
Uninstall until able to operate in reverse direction



## 5-7. Paper Replenishing

Refer to the following for paper replenishing.

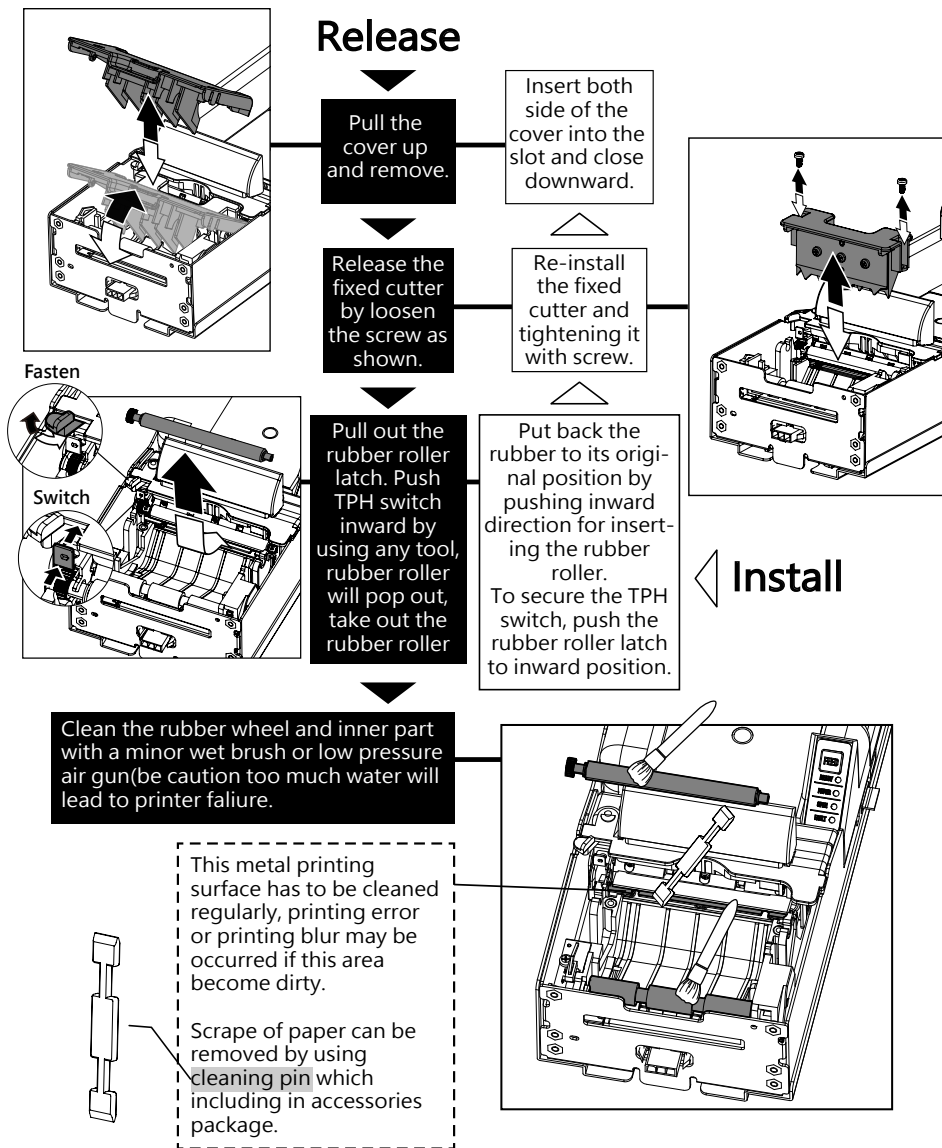
- Make sure the humidity condition is between 30% RH - 40% RH while removing paper.
- No volatile liquid sticking on the paper surface.
- Make sure loosen the paper before inserting into the printer.
- Make sure power output reached 24V/5A stable power supply.
- Use the ticket lever to avoid ticket stick together.





## 6. Maintenance

Please refer to the following diagram for cleaning purpose.



### Maintenance Notice

(Any improper maintenance will result in invalid warranty.)

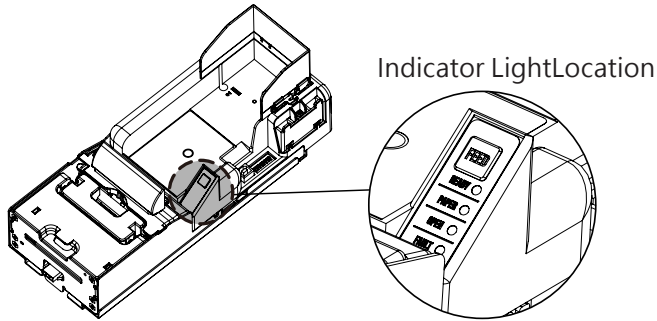
**Recommended**

Mild, non-abrasive, a small amount of soapy water.

**DO NOT USE**

Organic solvent, Alcohol, Volatile liquid.

## 7. Troubleshooting



Indicator Light				Errors	Solution
Ready	Paper	Open	Fault	Staus	
ON	X	ON	X	Cover open.	Close the cover.
ON	X	BLINK	X	Chassis open.	Latch the chassis properly.
ON	BLINK	X	X	Paper running out.	Replenish.
ON	ON	X	X	Exit blocked.	Clear the foreign object.
X	ON	X	X	No paper.	Insert Paper.
X	X	X	BLINK	Paper Jammed	Open cover to clear it

X : Not available.



**If the error can not be solved after corrective actions or happen again, please contact TOP for technical support.**

EL : +886-3-3115969 · FAX : +886-3-3115970 · WEBSITE : [www.topvme.com](http://www.topvme.com)





Top Vending Machine Electronics Co., Ltd.

NO.11, Anzhong St., Luzhu Dist., Taoyuan City338, Taiwan, (R.O.C.)

Phone : +886-3-3115969 · Fax : +886-3-3115970

E-mail : [sales@topvme.com.tw](mailto:sales@topvme.com.tw)

Website : [www.topvme.com](http://www.topvme.com)



Top Vending Machine Electronics Co., Ltd.



[www.topvme.com](http://www.topvme.com)